



School Types

- **Early Learning Schools**
 - Schools that serve young children in any age ranges of birth through age 5. Kindergarten and before and after school programs may also be provided.
 - If Grade 1 is provided, the school is no longer an Early Learning School. Rather, the school is an elementary school that has a Preschool program.
- **Preschools or Schools with Early Learning**
 - Programs that serve children below Grade 1 that are part of a school-age institution. For example, an elementary school that has a preschool program.
 - *The AdvancED Early Learning Protocol is required if the preschool is pursuing the Quality Rating Improvement System (QRIS) incentives or recognition of the State.*
 - *If not pursuing state recognition, the preschool is included in the school-level Self Assessment process.*

Early Learning Schools



3

© 2014 AdvancED



- Serve only Pre-K students
- Uses Early Learning Accreditation Standards and protocols for the Review
- Accredited as an Early Learning School

Schools with Early Learning



4

© 2014 AdvancED



- Serves PreK and any grades above Kindergarten
- Uses the AdvancED Standards for Quality Schools and the school accreditation protocol with the preschool as part of the school accreditation
- Addition of the Early Learning review is added if needed for recognition as an Early Learning program by the state

Early Learning Recognition

- Early learning recognition can be added to the External Review process during a school's review year by incorporating it into the overall review using the School Standards and the Early Learning Standards
- Currently accredited schools can add Early Learning recognition at any time within their five year term with a review of the Early Learning program

5

© 2014 AdvancED



Early Learning Standards

- 5 Standards
 - Aligned with AdvancED Standards for Schools
- 33 Indicators
 - Aligned with AdvancED Indicators for Schools
- 378 Criteria
 - Specific requirements and expectations
 - Scored at a met/not met level
 - 80% of the criteria must be met to achieve accreditation or recognition.
 - 80% means 76 or less Criteria may be rated as Not Met
 - All 9 Required Criteria MUST be rated as Met

6

© 2014 AdvancED



Early Learning Expectations

- Meet AdvancED Standards
- Implement continuous improvement process
- Conduct Internal Review
 - Self Assessment (Early Learning Standards)
 - Executive Summary
 - Improvement Plan
 - Assurances
- Host External Review once every five years
- Respond to Improvement Priorities

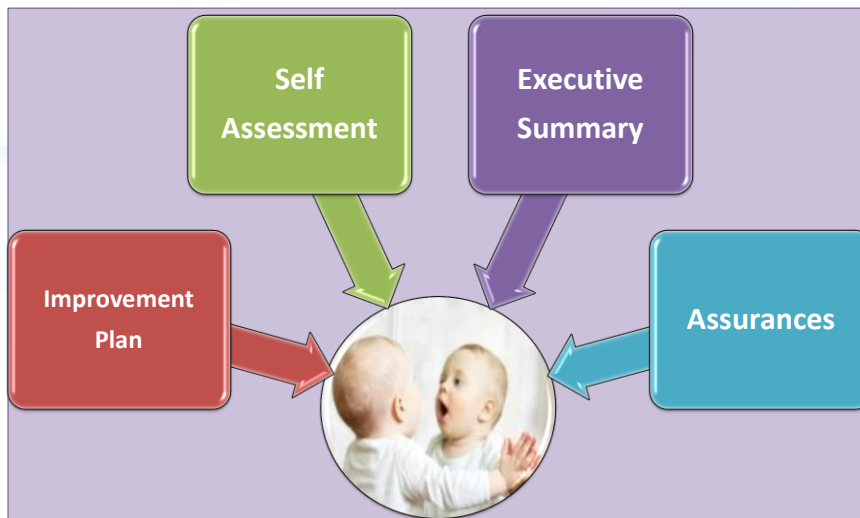
Internal Review Diagnostics are located in the AdvancED Self Assessment Workbook for Early Learning Schools

7

© 2014 AdvancED



Internal Review



8

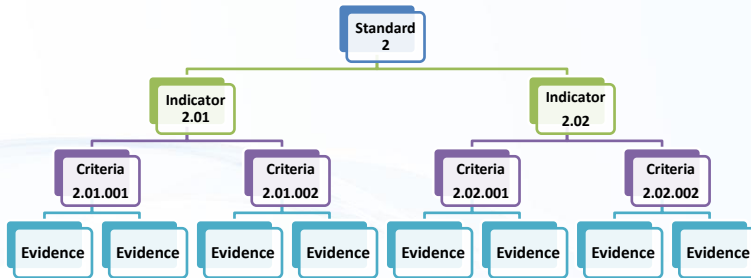
© 2014 AdvancED



Criteria Example

	Criteria	Evidence	Met	Not Met
1.01.001	The school has a clearly defined purpose statement that guides and defines the philosophy, program and learning expectations for children and families.	Statement of purpose that includes learning expectations for children and families		
1.01.002 Required	The school has an improvement planning process that ensures the implementation of the school's purpose, the achievement of learning expectations for children, the provision of high-quality services and long-term financial and resource management.	Written improvement plan that addresses the achievement of learning expectations		
Representative Evidence				
	Written improvement plan that addresses the achievement of learning expectations (1.01.002)			

Standards



- In the AdvancED Self Assessment Workbook, one Evidence is aligned to each Criteria. The Early Learning School may have different or additional Evidences to support each Criteria.
- Evidence has to be high quality. If evidence is not high quality then results don't matter.

Required Criteria

INDICATOR	TOPIC
1.01.002	Process for school improvement and effective management
2.01.019	Employee background checks; Minimum 18 yrs of age; high school diploma
2.01.024	Meet all State requirements; plan for corrections
3.01.001	Curriculum evidence-based; developmentally appropriate philosophy; addresses emotional, social, creative, physical growth and development of all children
3.01.014	Safe environment; free from threats (no corporal punishment)
4.01.001	Administrator holds proper qualifications
4.05.013	Protocol for safe-sleep procedures (safeguards against SIDS)
4.05.046	At least, one staff member, trained in CPR
4.11.001	At all times, supervision for infants, toddlers, twos

11



Early Learning Standards

AdvancED Early Learning Standards

<http://www.advanc-ed.org/services/early-learning-accreditation>

Adding Early Learning Recognition

- Notify Managing Office of intent to add Early Learning recognition
- Complete the Self Assessment for Early Learning
 - Identify and provide the representative evidences to be provided for the review team
 - Identify evidence for all met criteria
- Submit the Self Assessment for Early Learning to Managing Office
- Host a review of Early Learning

13

© 2014 AdvancED



14

© 2014 AdvancED



**External
Review**

External Review Options

- Integrated into the school External Review
 - All programs would be part of the overall school review
 - One team member would be assigned to validate the Early Learning criteria and complete an Early Learning Report in conjunction with the school report
 - School would be accredited and would also receive Early Learning recognition

15

© 2014 AdvancED



External Review Options

- Added to existing school accreditation
 - School would complete the Early Learning Self Assessment
 - A small team (probably 2 individuals) would conduct an on-site review of the Early Learning program and complete an Early Learning Report
 - School would receive Early Learning recognition for the Early Learning program added to their existing accreditation

16

© 2014 AdvancED



Schools in Systems Accreditation

- Any early learning program seeking recognition must have an on-site review
- Can use either option integrated into the External Review process or added to existing accreditation
 - The selected may depend on the number of schools in the system seeking this recognition and the size and capacity of the team to review all programs

17

© 2014 AdvancED



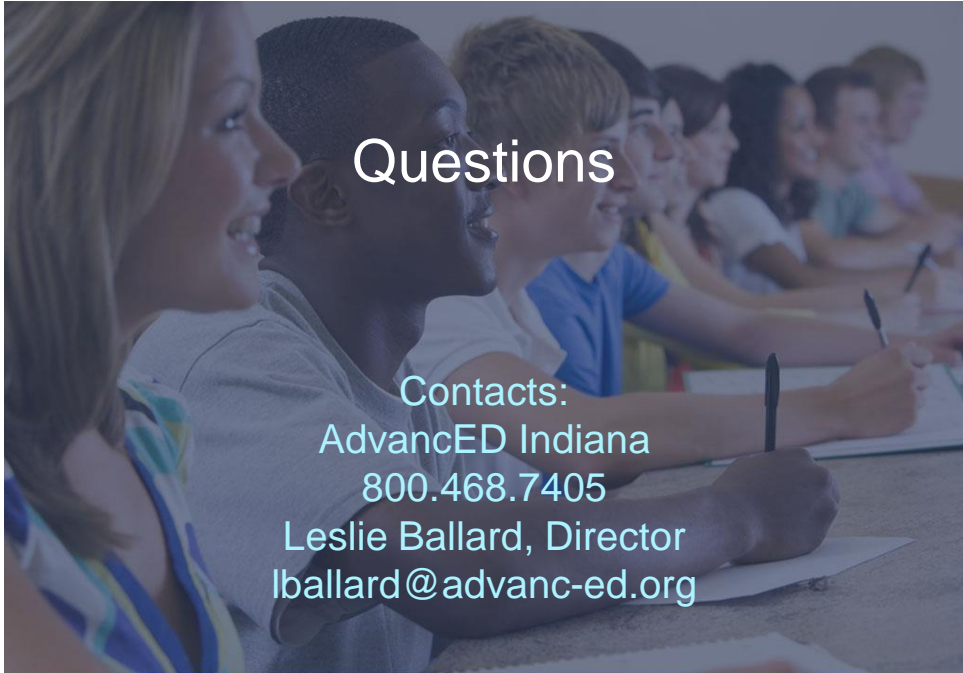
Schools Seeking Accreditation

- Schools not currently accredited by AdvancED would follow the process for new schools
 - School would apply for accreditation
 - Host a Readiness Review
 - Achieve candidate status
 - Host an External Review within two years of achieving candidacy
 - School would not be accredited or have Early Learning recognition until after the External Review.

18

© 2014 AdvancED





Questions

Contacts:
AdvancED Indiana
800.468.7405
Leslie Ballard, Director
lballard@advanc-ed.org

Create a World of Opportunities for Every Learner



Find Us



www.facebook.com/AdvancEDorg



@AdvancEDorg and @MarkElgart



www.youtube.com/AdvancEDorg

www.advanc-ed.org

